



Saint Joseph's
Catholic Church

4- PAL SUN
HOLY
THURSDAY
FRIDAY

2-10-2006

Cheyenne South Side Historic District, St. Joseph's Catholic Church
Located at 300 E 6th St. Cheyenne, Wyoming

Laramie County

View is ENE

Photographer: Richard Collier



FAITH UNITED
METHODIST CHURCH
522 E. 6TH
PASTOR
"GILBERT HANSEN"
SUNDAY SCHOOL, WORSHIP
WEDNESDAY, 7:00 P.M.
OFFICE ENTRANCE

2-10-2006

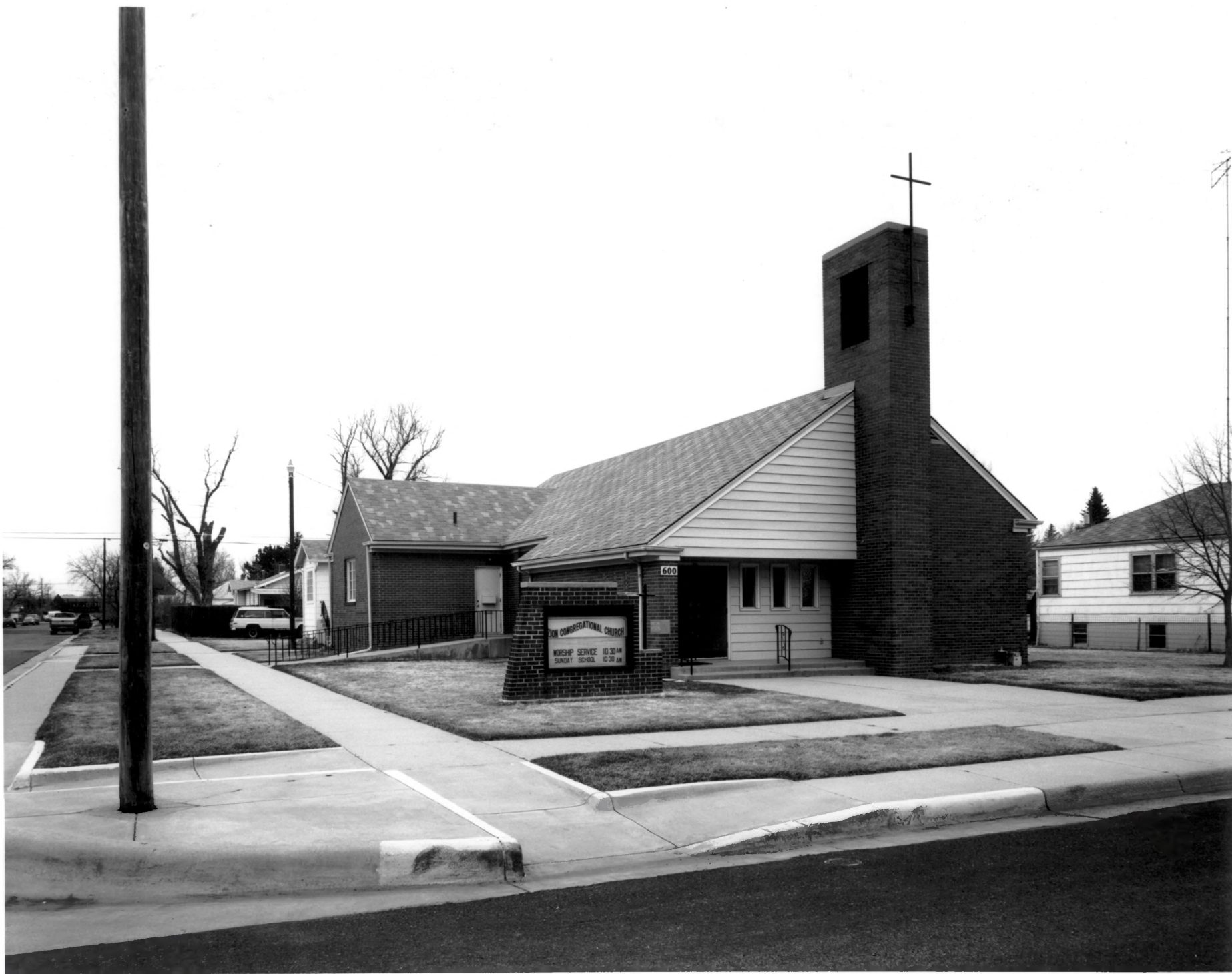
Cheyenne South Side Historic District, Faith United Methodist Church

Located at 522 E 6th St. Cheyenne, Wyoming

Laramie County

View is NW

Photographer: Richard Collier



2-10-2006

Cheyenne South Side Historic District, Zion Congregational Church
Located at 600 E 7th St. Cheyenne, Wyoming

Laramie County

View is NNE

Photographer: Richard Collier



2-10-2006

Cheyenne South Side Historic District, Streetscape

Located at 615, 617 + 619 E 9th St.

Cheyenne, Wyoming

Laramie County

View is South looking at the (North) front
of the bldgs.

Photographer: Richard Collier



2-10-2006

Cheyenne South Side Historic District, Streetscape
Located at 400, 406 & 410 E 8th St.

Cheyenne, Wyoming

Laramie County

View is North looking at the (south) front
of the bldgs.

Photographer: Richard Collier



2-10-2006

Cheyenne South Side Historic District, Streetscape

Located at 208, 210 + 220 E 8th St.

Cheyenne, Wyoming

Laramie County

View is NNW looking at the (South) front
of the bldgs.

Photographer: Richard Collier



2-10-2006

Cheyenne South Side Historic District, Houses

Located at 916 + 920 Russell Ave.

Cheyenne, Wyoming

Laramie County

view is West looking at (East) front
of the bldgs.

Photographer: Richard Collier



2-10-2006

Cheyenne South Side Historic District, Streetscape

Located at 800, 804, 806, 812 + 822 E 8th St.

Cheyenne, Wyoming

Laramie County

View is NE looking at the (South) front
of the bldgs.

Photographer: Richard Collier



2-10-2006

Cheyenne South Side Historic District, Streetscape

Located at 600, 606, 614 + 620 E 8th St.

Cheyenne, Wyoming

Laramie County

View is NW looking at the (south) front
of the bldg.

Photographer: Richard Collier



2-10-2006

Cheyenne South Side Historic District, Houses
Located at 902 + 910 Van Lennan Ave.

Cheyenne, Wyoming
Laramie County

View is West looking at the (East) front
of the bldg.

Photographer: Richard Collier



2-10-2006

Cheyenne South Side Historic District, Streetscape

Located at 819 Evans Ave. + 407 E 9th St.

Cheyenne, Wyoming

Laramie County

View is SE

Photographer: Richard Collier



2-10-2006

Cheyenne South Side Historic District, Streetscape
Located at 603, 611, 615 & 619 E 10th St.

Cheyenne, Wyoming
Laramie County

View is SE looking at the (North) front
of the bldgs.

Photographer: Richard Collier



2-10-2006

Cheyenne South Side Historic District, Streetscape

Located at 901-903, 206, 212 & 222 E 9th St.

Cheyenne, Wyoming

Laramie County

View is NW looking at the (South) front
of the bldgs.

Photographer: Richard Collier



2-10-2006

Cheyenne South Side Historic District, Houses

Located at 920 Maxwell Ave. & 519 10th St

Cheyenne, Wyoming

Laramie County

View is SW

Photographer: Richard Collier



2-10-2006

Cheyenne South Side Historic District, House
Located at 201 10th St.

Cheyenne, Wyoming
Laramie County

View is S E looking at the (North) front +
(west) side of the bldg.

Photographer: Richard Collier



2-10-2006

Cheyenne South Side Historic District, streetscape

Located at 914 + 920 House Ave.

Cheyenne, Wyoming

Laramie County

View is West looking at (East) front
of the bldgs.

Photographer: Richard Collier